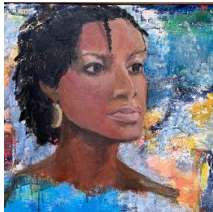




**Barbara Shelly**, WHAM Artistic Director, is a mixed media artist whose electrifying collages are an emotional response to current events in the world of fashion, the performing arts and politics.



**Denise Adler**, a WHAM curator, combines drawings, painting and collage in portraits and dreamscapes that express the mythic and the legendary with found materials to tell a story within the story.



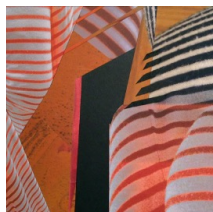
**Laurie Lamont Murray**, a WHAM curator, is a painter and metal sculptor whose work ranges from purely abstract to abstracted realism, using oils, acrylic and repurposed metals.



**Cindy Bernier**, WHAM Curator and a lifelong dancer, explores paint as movement on canvas, through dynamic mark making and layers of color.



**Lola Sandino Stanton** weaves form, line and color into her portraits and floral compositions, in her quest to find and show beauty for the viewer's appreciation.



**Florence Weisz** is a primarily paper collage artist whose recent Sensuous Stripes series explores the myriad ways that rigid parallel lines can become organic and sensuous.



**Sandra Benhaim** is a primarily abstract painter whose unabashed exuberantly colorful style often incorporates mixed media and collage on a full range of substrates.



**Barbara Dirnbach's** adventurous figurative paintings reveal her ongoing love of new challenges and techniques as she examines life from literally every angle.



**Fang Sullivan** is a violinist, dancer, advertising art director and accomplished pastel and oil painter who creates her highly colored compositions at every opportunity.



**Susan Wolfe's** acrylic and collage works are a clear indicator of her interior design background, revealing her strong sense of composition, color and materials.



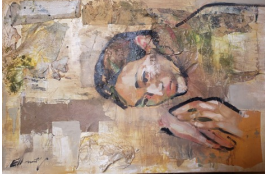
**Terry Finch's** paintings reflect the formative years spent in the desert Southwest, where canyons, mountains and mesas were her playground.



**Nancy Sandler** Bass captures a sense of place and immediacy in her oil paintings, to offer viewers an intimate visual experience before it is consigned to the concrete world.



**Brittany Vogel's** expressive paintings and drawings often focus on oppositional forces (order vs chaos, geometric vs organic) in work that is full of excitement, color and life.



**Kelly Elkowitz** is an innovative figurative painter who places her subjects at unexpected angles on unique surfaces made by sewing, collage, embroidery and cutting away.



**Abbe Resnick** is an oil and acrylic painter whose figurative and abstract paintings are notable for their competent design and fresh, balanced color combinations.



**Lisa Lockwood** is a ballet dancer with stellar credentials who works with mixed media and acrylics on linen to create paintings which reflect her expertise at gardening.



**Joan Menschenfreund's** oil and watercolor paintings reveal her love of the vibrancy and diversity of the Upper West Side after an impressive career in publishing and photo editing.



**Xiu Fen Zhou** is a multi-faceted Chinese American artist who is best known for her silk screens and woodcuts, which have been exhibited all over the world.



**Henrietta Mantooth's** painting can be described as "witnessing." The work is often based on images and stories in the news, people who look out at us every day from the printed page and television screen but who are usually nameless — refugees, rebels, farmers, men and women who tend and defend their land, homes, children, animals, and ideas.